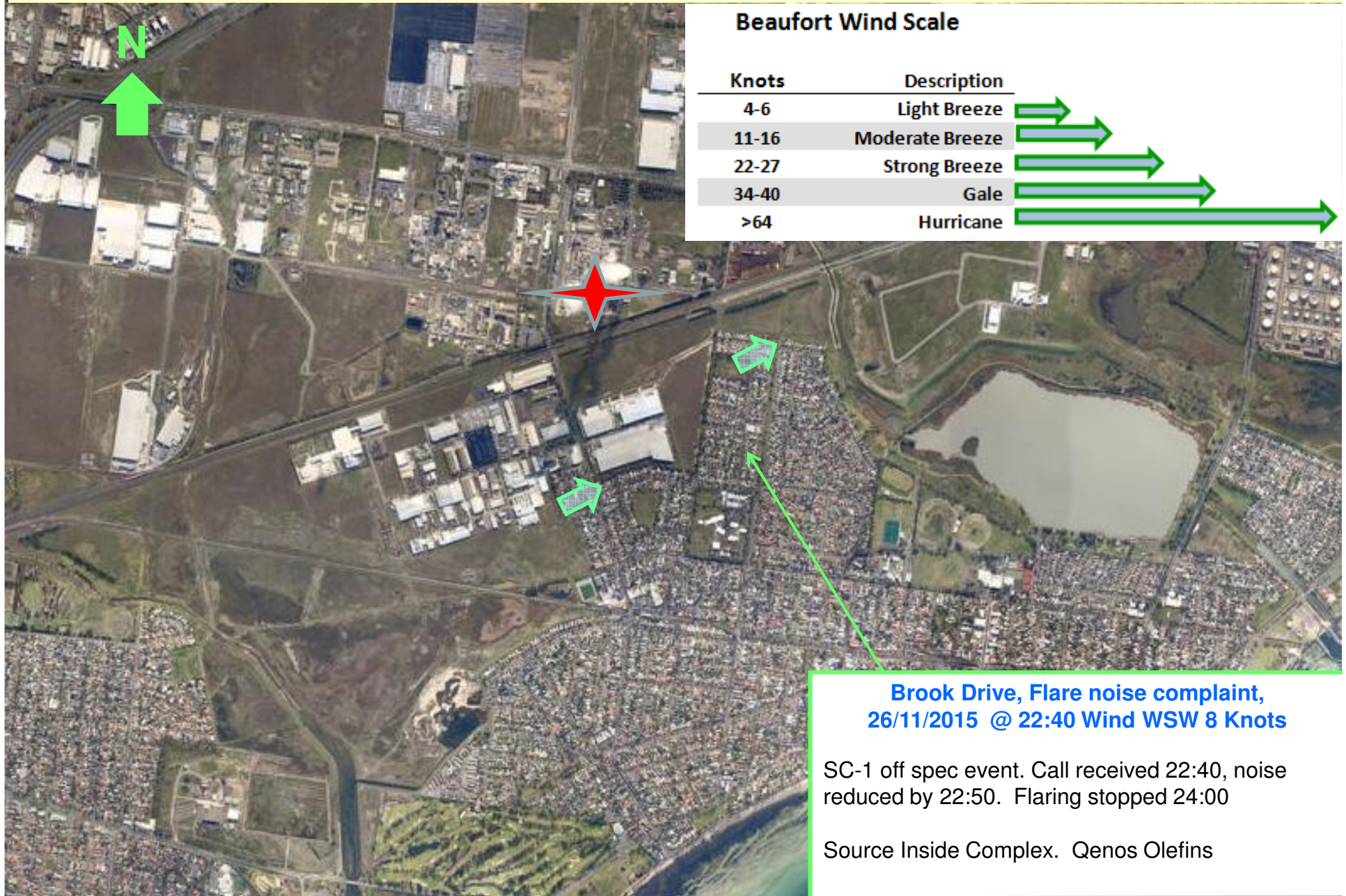


EAL

November 2015



Beaufort Wind Scale

Knots	Description
4-6	Light Breeze
11-16	Moderate Breeze
22-27	Strong Breeze
34-40	Gale
>64	Hurricane

**Brook Drive, Flare noise complaint,
26/11/2015 @ 22:40 Wind WSW 8 Knots**

SC-1 off spec event. Call received 22:40, noise reduced by 22:50. Flaring stopped 24:00

Source Inside Complex. Qenos Olefins

EAL

January 2016



**Charles Road, Flare noise complaint,
19/1/2016 @ 23:05 Wind SW 8 Knots**

Olefins flaring following SC-2 off spec event.
Call received 23:05, flaring ceased by 23:30.

Source Inside Complex. Qenos Olefins

EAL

February 2016



**Brook Drive, Flare noise complaint,
28/2/2016 @ 02:30 Wind SSW 9-17 Knots**

Olefins flaring during SCAL-2 start up. Email received 2/3/16. Flaring ceased @ 05:00

Source Inside Complex. Qenos Olefins

**Charles Road, Odour Complaint,
24/2/2016 @ 22:27 Wind 300 deg 5 Knots**

BOM & Qenos data indicate Olefins ETP as a possible source. Not detected with site visit. Olefins held waste water in storm pond.

Source Inside Complex. Qenos Olefins

EAL

March 2016



**Charles Rd, Odour Complaint,
1/3/2016 @ 13:45 Wind 318 deg 14 Knots**

Faint Olefins ETP odour detected at Charles Rd. Storm pond empty. ETP not on divert.

Source Inside Complex. Qenos Olefins

EAL

April 2016



**5/4/2016 @ 11:20 Belmar Ave
Strong kerosene type odour complaint,
N/NNW 25 Knots**

No odours detected in community. No plant activities identified as probable cause. No complex source identified but wind consistent with complex.

Source Unknown: Plausible Complex

**Charles Rd, Odour complaint,
1/4/2016 @ 15:00 Wind deg NNW 24 Knots**

Faint wafting ETP odour detected at Charles Rd. Storm pond empty. ETP not on divert. Wind consistent with Olefins as source.

Source Inside Complex. Qenos Olefins

EAL

April 2016



(649) McAlpine Crt, Burning Plastic Odour Complaint, 9/4/2016 @ 22:00 Wind light variable , WNW to N
Caller first detected odour at the Laverton turn off of Western Ring rd north of the complex. Winds mainly NW indicating source north of complex.

Source Outside Complex.

Community Environmental Complaints April 2016

