

# EAL

## Complaints Nov 2014- April 2015





EAL

December 2014



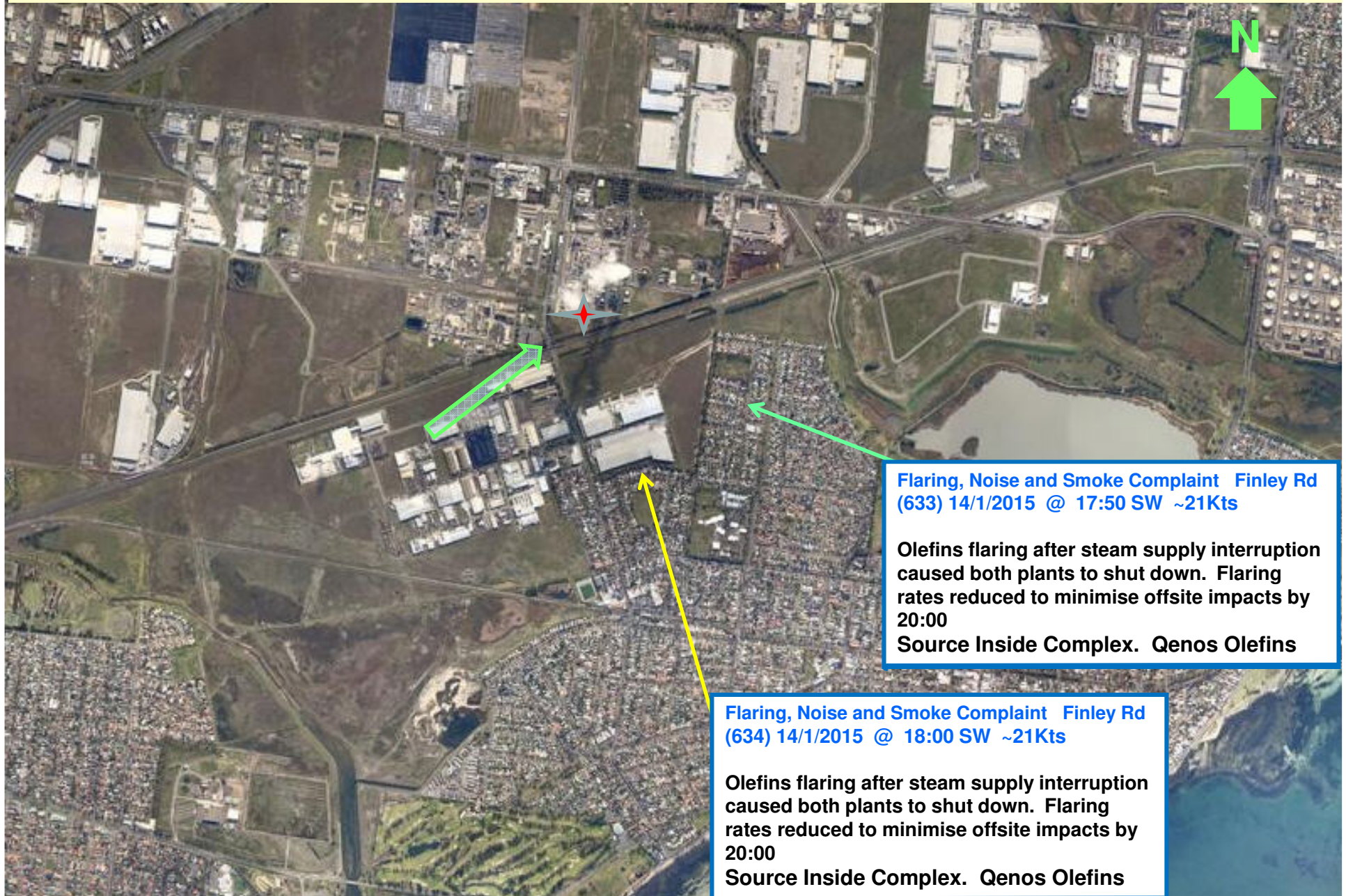
**Plastic / Paint thinners like odour Complaint**  
Linnet St (631) 13/12/2014 @ 09:00 North ~15 Kts  
Odour strength moderate for ~ 30 mins. Nothing at  
complex identified. Wind consistent with complex  
but not odour character.  
Source Unknown. Unlikely complex.

**Plastic / Paint thinners like odour Complaint**  
Linnet St, (632) 14/12/2014 @ 07:35 Nth 8-13 Kts  
Odour had an earthy refinery type odour. Not  
detected on visit, no complex activities that  
coincide with odour. Wind consistent with complex.  
Source Unknown. Plausible complex.  
Weather data from Laverton BOM



EAL

January 2015



**Flaring, Noise and Smoke Complaint Finley Rd (633) 14/1/2015 @ 17:50 SW ~21Kts**

Olefins flaring after steam supply interruption caused both plants to shut down. Flaring rates reduced to minimise offsite impacts by 20:00

Source Inside Complex. Qenos Olefins

**Flaring, Noise and Smoke Complaint Finley Rd (634) 14/1/2015 @ 18:00 SW ~21Kts**

Olefins flaring after steam supply interruption caused both plants to shut down. Flaring rates reduced to minimise offsite impacts by 20:00

Source Inside Complex. Qenos Olefins



EAL

January 2015



Flaring, Noise and Smoke Complaint Finley Rd  
(635) 19/1/2015 @ 16:00 SSE ~12Kts

During restart after previous steam failure,  
plant stability had not yet been established  
and significant flaring occurred.

Source Inside Complex. Qenos Olefins



# EAL 12 Months to April 2015

